

**NE122SS STAINLESS STEEL  
IN POOL LADDER**

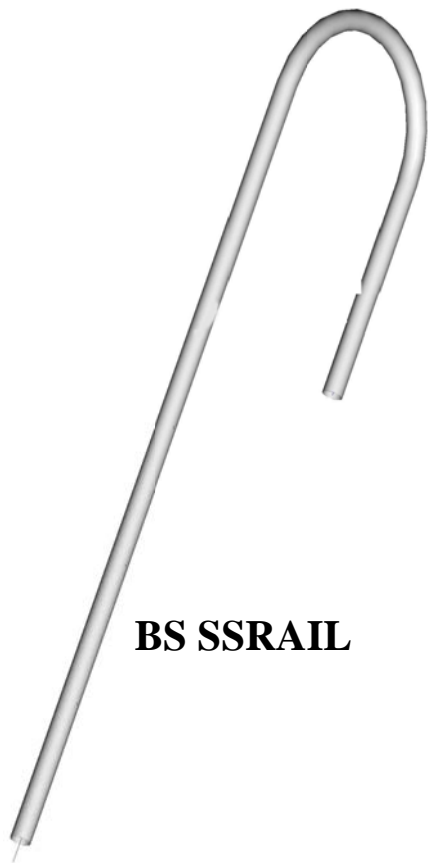


**ASSEMBLY  
AND  
INSTALLATION INSTRUCTIONS**

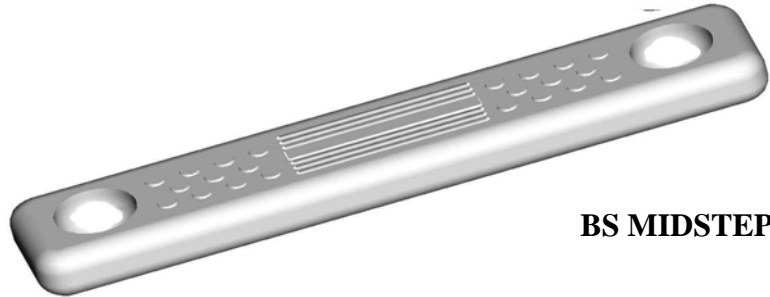
# Parts Identification

## STEP 1

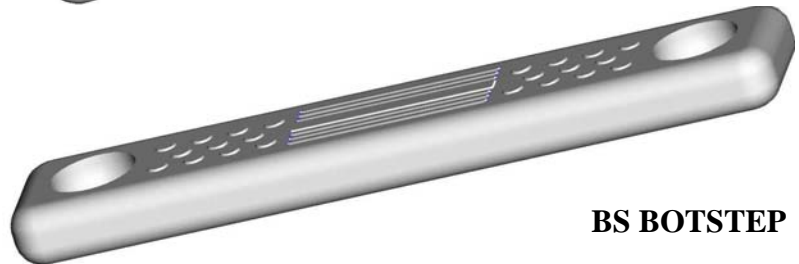
Unpack box and check parts against parts list below.



**BS SSRAIL**



**BS MIDSTEP**



**BS BOTSTEP**



**BS STPBALL**



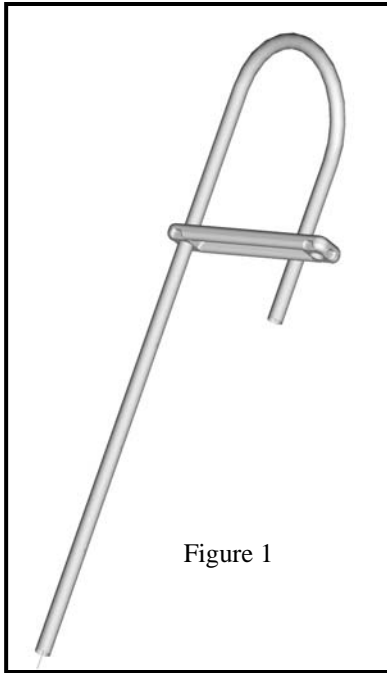
Quantity 8 Each

**BS 698HDWR**

## PARTS LIST

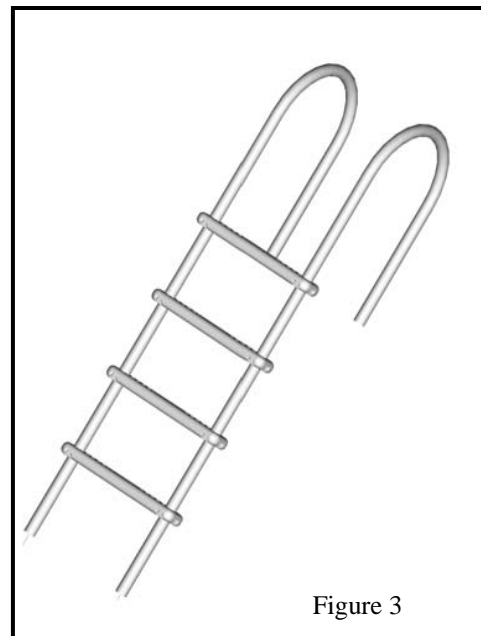
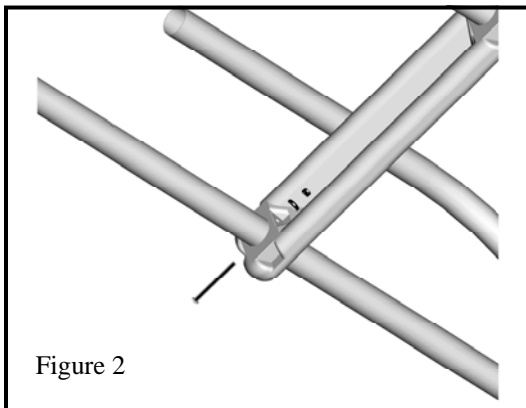
<u>QUANTITY</u>	<u>PART #</u>	<u>DESCRIPTION</u>
2	BS SSRAIL	STAINLESS STEEL HAND RAIL
4	BS MIDSTEP	LADDER STEPS
2	BS STPBALL	PIVOT BALLS FOR BASE STEP
1	BS BOTSTEP	BOTTOM STEP
1	BS 698HDWR	HARDWARE BAG
2		PLASTIC FLANGES

## STEP 2



- Slide 1 of the 4 ladder steps onto one of the stainless steel handrails. See figure 1
- Make sure that the step treads are facing up.
- If you have any difficulty sliding the step onto the handrail apply a small amount of oil to the handrail.
- Align the holes in the step with the top set of holes on the handrail.
- Secure step to handrail with a bolt and nut. Make sure that the head of the bolt is located on the outside of the step.

See figure 2



- Slide the second handrail thru the hole on the opposite side of the step. Secure with a nut and bolt. See figure 2
- Slide the remaining 3 steps onto the handrails and secure them with nuts and bolts. See figure 3

